

Partsc 

# Upholstery Fabrics

Seating & Cushions  
Grade A



## Grade A Upholstery



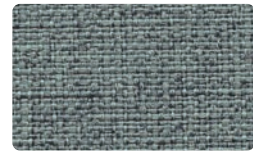
### Palette\*



Paprika



Chamomile



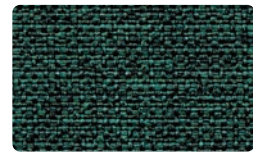
Lichen



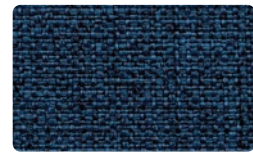
Birch Bark



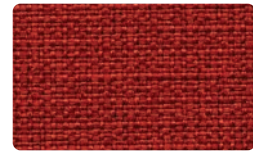
Acorn



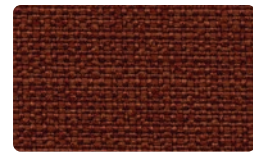
Nettle



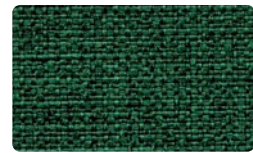
Indigo



Sumac



Annatto



Spinach



Iron

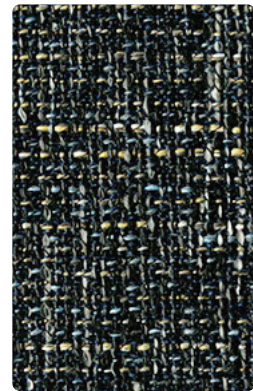
### Terrain



Fall Leaf



Bluebird

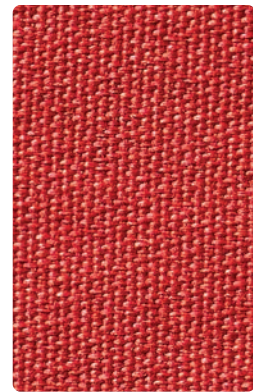


Crow

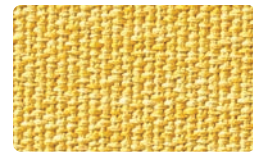


Owl

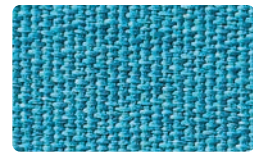
### Medley



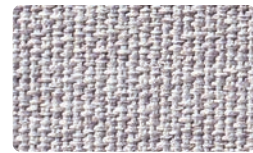
Cherry



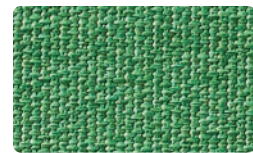
Dijon



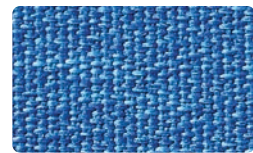
Aspen



Lead



Aloe



Night Sky



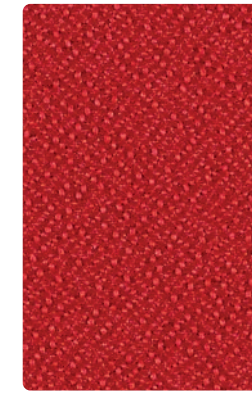
Ebony

\*Palette fabric can also be used for screens, tackboards and overheads.

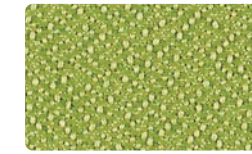
## Grade A Upholstery



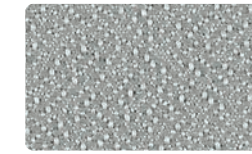
### Mirador\*\*



Red



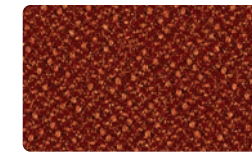
Light Green



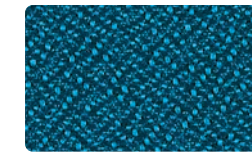
Storm



Neutral



Rusty



Lake Blue



Navy Blue



Midnight Black

### Durdle



Cayenne



Taupe



Smoke Blue

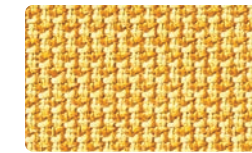


Ash

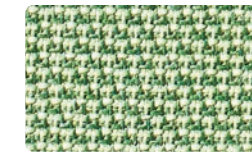
### Zagger



Cinnamon



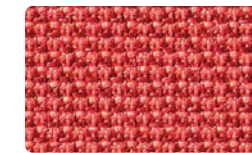
Sunny



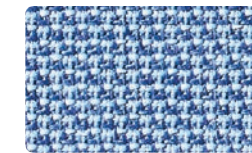
Leaf



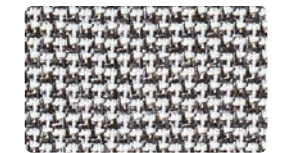
Cloud



Cardinal



Marine



Ink

\*\*Mirador fabric can also be used for panels, screens, tackboards and overheads.



# Grade A Polyurethane Upholstery



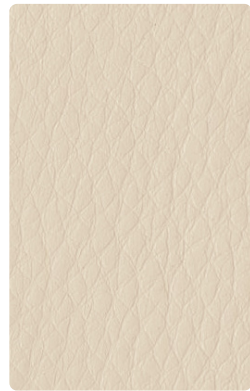
## Wellesley



Luggage



Apple Green



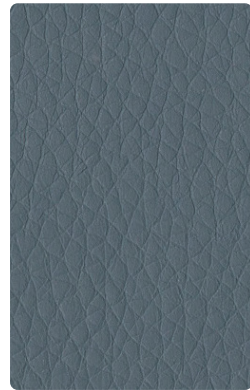
Sandy



Snow



Chili



Williamsburg



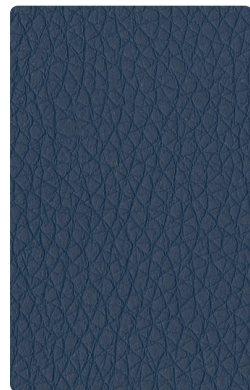
Quarry



Steel



Lipstick



Ocean



Java



Black

# Grade A Polyurethane Upholstery

## Technical Information

Pattern	Width	Cleaning Code	Content	Lightfastness	Flammability (CAL 117 Section E)	Repeat	Backing	Finish	Abrasion
Wellesley	54"	WS	100% Polyurethane	Grade 4 min. at 100hrs	Pass	None	70% Polyester; 30% Cotton	Antimicrobial - Silver Ion Technology	200,000 Rubs

Wellesley is a PVC free upholstery.

## Cleaning Instructions

A clean cloth, dampened with the appropriate cleaning solution, should be applied to the affected areas as soon as possible. Blot the fabric with the treated cloth, working from the outer edge of the stained area and moving in toward the center. In order to effectively draw out the stain, renew the cleaning cloth as often as necessary to maintain an absorbent surface.

Clean all stained areas as soon as possible in accordance with the recommended stain removal procedures. Spot clean with upholstery shampoo, foam from a mild detergent, or mild dry cleaning solvent. Hot water extraction or steam cleaning is not a recommended cleaning method. Clean spots or stains from the outside to the middle of the affected area to prevent circling. Disinfects with 5:1 water / bleach solution.



# Grade A Upholstery

## Technical Information

Pattern	Width	Cleaning Code	Content	Lightfastness	Flammability (CAL 117 Section E)	Repeat	Backing	Abrasion
Palette*	54"	WS	100% Polyester	Grade 4 min. at 40hrs	Pass	None	None	100,000 Double Rubs
Terrain	54"	W	100% Polyester	Grade 4 min. at 40hrs	Pass	None	Synthetic Latex Blend	95,000 Rubs
Medley	54"	WS†	100% Polyester (75% Post-Consumer Recycled)	Grade 4 min at 40hrs	Pass	None	Stain Repellent Latex Backing	100,000 Rubs
Mirador**	66"	WS†	100% Polyester (100% Post-Consumer Recycled)	Grade 4 min at 40hrs	Pass	None	None	100,000 Double Rubs
Durdle	54"	W	100% Polyester	Grade 4 min at 40hrs	Pass	None	Polyester	55,000 Rubs
Zagger	54"	WS†	100% Polyester (63% Post-Consumer Recycled)	Grade 4 min at 40hrs	Pass	None	Stain Repellent Latex Backing	100,000 Double Rubs

*Finish Note:* Terrain and Durdle both feature an i-clean™ finish, a high performance stain and moisture repellent based on Nano technology.

\*Palette fabric can also be used for screens, tackboards and overheads.

\*\*Mirador fabric can also be used for panels, screens, tackboards and overheads.

†Not tested for bleach.

## Mirador Standard with Antimicrobial

Mirador fabric has been treated with EPA-registered, Microban®, a zinc-based antimicrobial by ZPTech®

- Mirador fabric inhibits the growth of bacteria, fungi, mold, and mildew.
- As treated, Mirador fabric reduces bacterial activity by over 90-99% based on test results on gram positive and gram negative bacteria.
- Mirador fabric is durable, resists mold and mildew, resists odors caused by bacteria.
- This technology is factory applied, durable, and non-migrating, providing hygienic freshness while preventing staining and deterioration.
- Works 24/7: ZPTech® technology is constantly active on the surface of treated products.